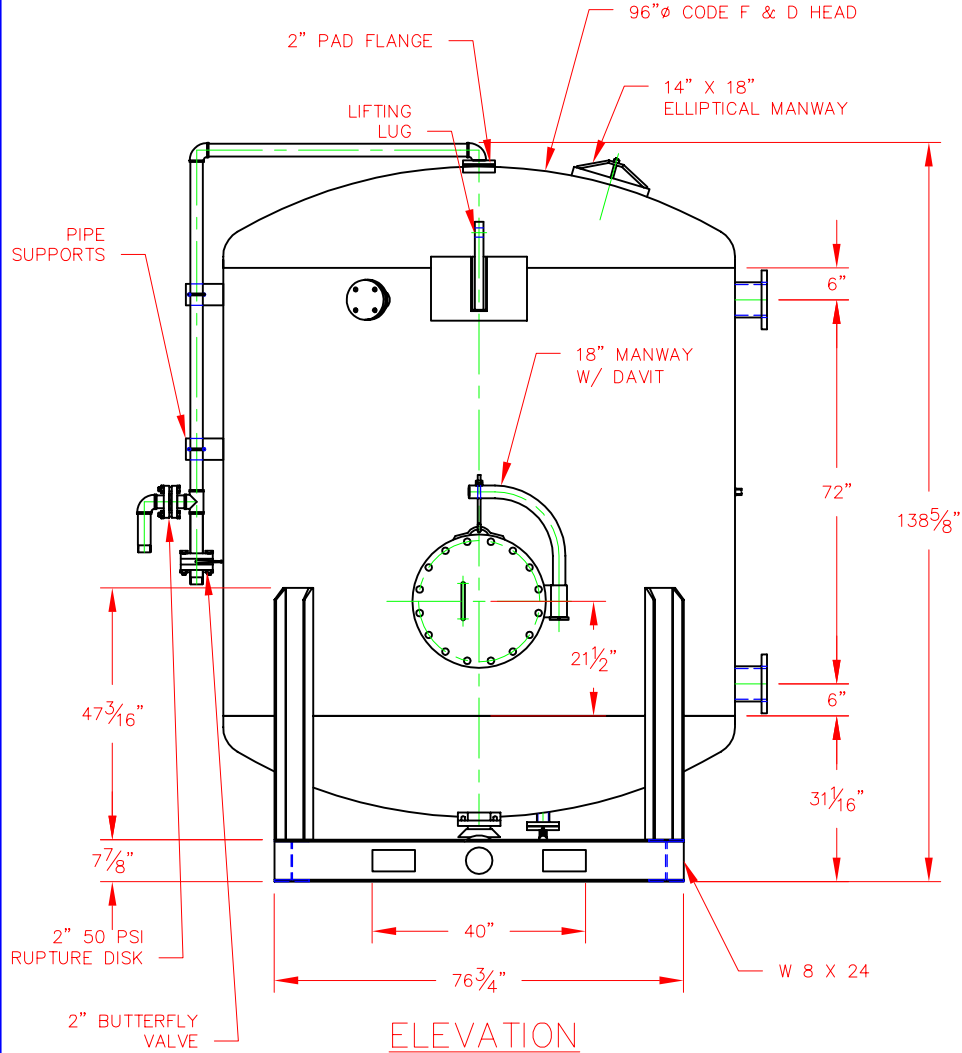
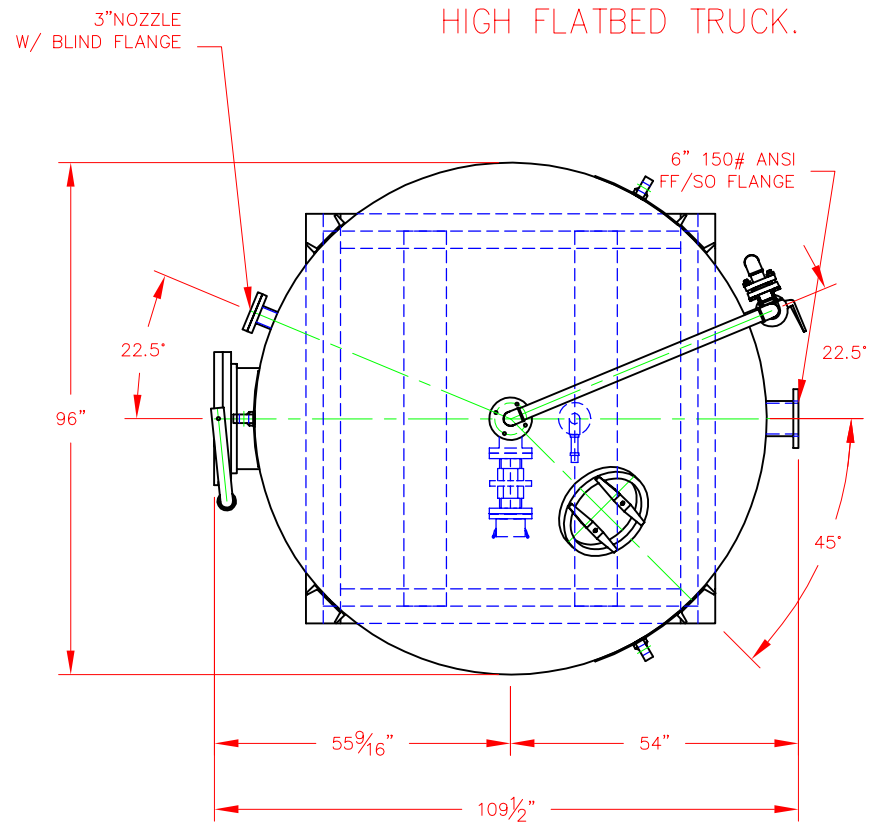


NOTE: SEE PLAN VIEW FOR CORRECT ORIENTATIONS.
VESSEL MUST SHIP ON 18" HIGH FLATBED TRUCK.



ELEVATION



PLAN

VESSEL STANDARDS

VESEL MATERIALS : SA 516 70	LIQUID DRAIN ASSEMBLY : CARBON STEEL
LINING : HIGH SOLIDS EPOXY	VOLUME OF VESSEL : 400 FT ³
EXTERIOR PAINT : ACRYLIC ALKYD ENAMEL	STANDARD/MAX CARBON FILL : 8,000 LBS / 10,000 LBS
HEAD THICKNESS : 5/16" CODE F&D	SHIP WT. OPERATING WT.STD.FILL : 14,500 LBS / 26,000 LBS
SHELL THICKNESS : 5/16" 516 - 70	CARBON TYPE : 12 X 40
INTERNALS : PVC	MAX. OPERATING PRESSURE : 50 PSIG
ADSORBENT OUTLET ASSEMBLY : 14" X 18" MANWAY	MAX. OPERATING TEMP. : 140°F

1	REVISE CARBON WEIGHT	JB	1/20/04
NO.	REVISION	BY	DATE
PROJECT			
STANDARD			
PROJ. NO.	SALES		
P.O. NO.	THIS DRAWING AND DESIGN ARE THE PROPERTY OF TIGG CORP. AND SHALL NOT BE REPRODUCED IN WHOLE OR IN PART, NOR EMPLOYED FOR ANY PURPOSE OTHER THAN SPECIFICALLY PERMITTED IN WRITING BY TIGG CORP. THIS DRAWING IS SUBJECT TO REVISION ON DEMAND.		
DRAWN BY	JB		
DESIGN BY	BL		
CHKD. BY	BL		
DATE	7/5/02	DWG. NO.	
SCALE	NTS	C-500-1001	
			REV. 1



C-500

C-500-1001