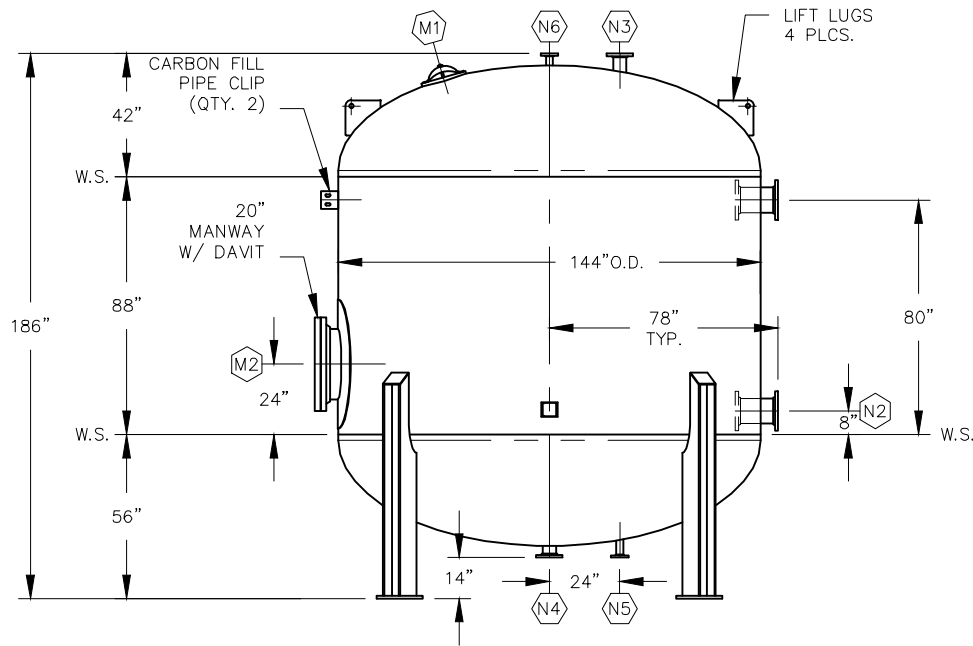
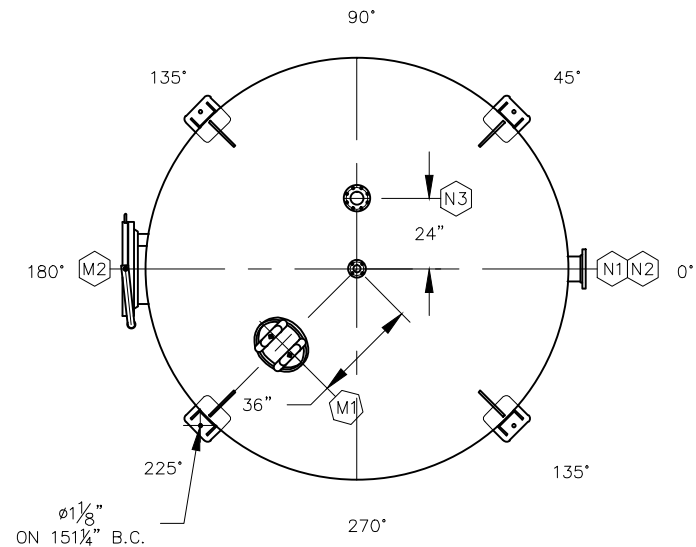


MARK	SERVICE	DESCRIPTION	LOCATION
N6	AIR RELIEF	2" 150# FFSO FLANGE	TOP HEAD
N5	DRAIN	2" 150# FFSO FLANGE	BOTTOM HEAD
N4	CARBON DISCHARGE	4" 150# FFSO FLANGE	BOTTOM HEAD
N3	CARBON FILL/PRES. RELIEF	4" 150# FFSO FLANGE	TOP HEAD
N2	OUTLET	8" 150# FFSO FLANGE	SHELL
N1	INLET	8" 150# FFSO FLANGE	SHELL
M2	MANWAY	20" 150# FFSO W/ DAVIT	SHELL
M1	MANWAY	14"x18" ELL. MANWAY	TOP HEAD
MARK	SERVICE	DESCRIPTION	LOCATION

NOZZLE SCHEDULE




ELEVATION



PLAN

VESSEL STANDARDS

VESSEL MATERIALS : SA-516-70	VESSEL ACCESS : 20" BOLTED MANWAY W/ DAVIT
LINING : NSF APPROVED VINYL ESTER	LIQUID DRAIN ASSEMBLY : 2" 150# FFSO FLANGE
EXTERIOR PAINT : EPOXY BASE / URETHANE TOP COAT	TOTAL VOLUME : 1319 FT ³
HEAD THICKNESS : 5/8" NOM.	SHIP WT. EMPTY : 17,000 LBS
SHELL THICKNESS : 5/8" NOM.	MAX. OPERATING PRESSURE : 125 PSIG/-15 PSIG (VAC.)
INTERNALS : STAINLESS STEEL	MAX. OPERATING TEMPERATURE : 150°F

1	UPDATE VESSEL STANDARDS	RC	5/1/13
NO.	REVISION	BY	DATE
PROJECT		CP-20K-12	
PROJ. NO.	SALES		
P.O. NO.			
<small>THIS DRAWING AND DESIGN ARE THE PROPERTY OF TIGG CORP. AND SHALL NOT BE REPRODUCED IN WHOLE OR IN PART, NOR EMPLOYED FOR ANY PURPOSE OTHER THAN SPECIFICALLY PERMITTED IN WRITING BY TIGG CORP. THIS DRAWING LOANED, SUBJECT TO RETURN ON DEMAND.</small>			
DRAWN BY	JB	<p style="text-align: center;">PLAN & ELEVATION</p> <p style="text-align: center;">CP-20K-12-1001 REV. 1</p>	
DESIGN BY	JB		
CHKD. BY	JL		
DATE	1/12/12		
SCALE	NTS		